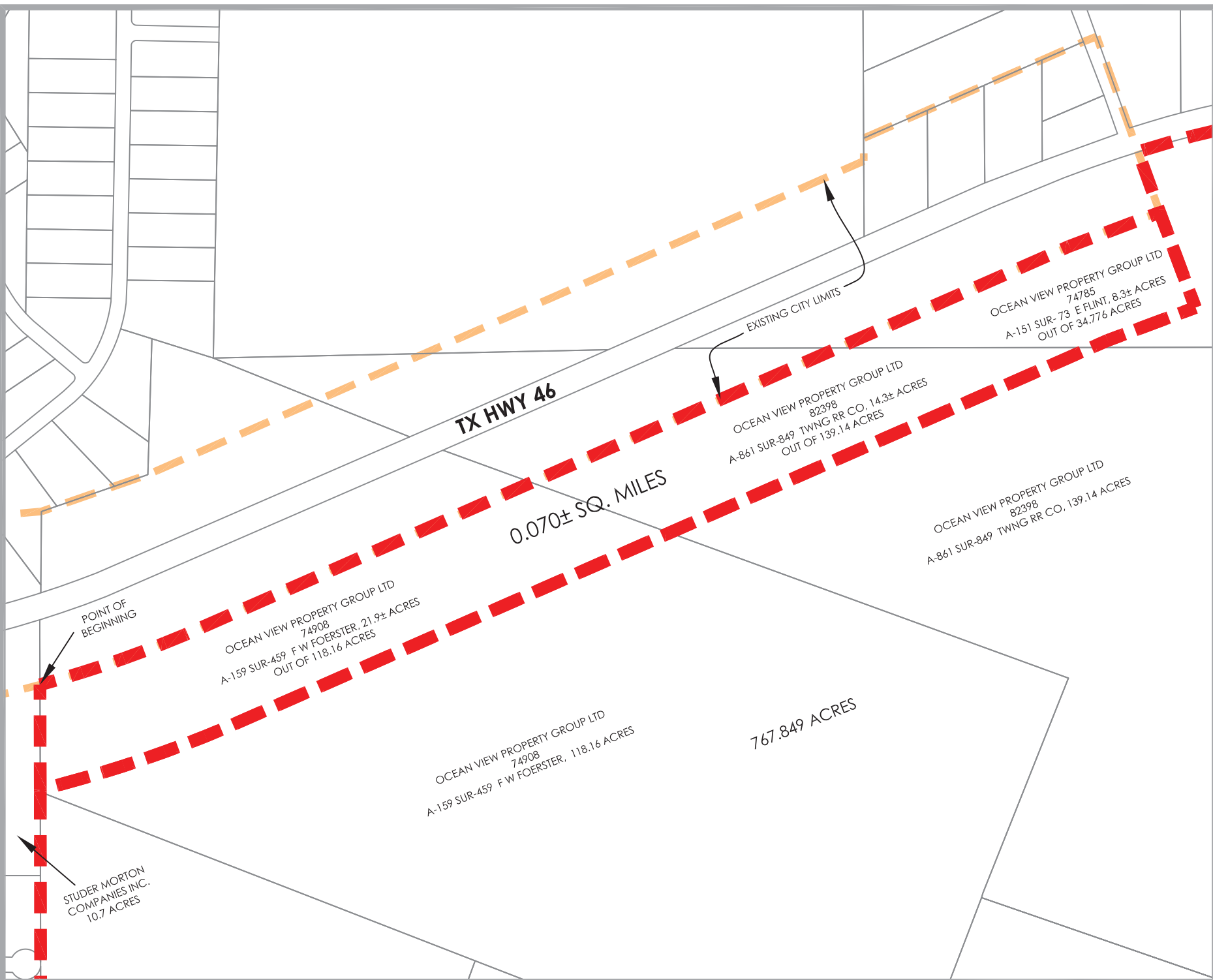




**POLITICAL BOUNDARY ANNEXATION
TO CITY OF BULVERDE
PHASE-4 EXHIBIT**



TX HWY 46

0.070± SQ. MILES

EXISTING CITY LIMITS

POINT OF BEGINNING

OCEAN VIEW PROPERTY GROUP LTD
74908
A-159 SUR-459 F W FOERSTER, 21.9± ACRES
OUT OF 118.16 ACRES

OCEAN VIEW PROPERTY GROUP LTD
74908
A-159 SUR-459 F W FOERSTER, 118.16 ACRES

OCEAN VIEW PROPERTY GROUP LTD
82398
A-861 SUR-849 TWNG RR CO. 14.3± ACRES
OUT OF 139.14 ACRES

OCEAN VIEW PROPERTY GROUP LTD
74785
A-151 SUR- 73 E FLINT, 8.3± ACRES
OUT OF 34.776 ACRES

OCEAN VIEW PROPERTY GROUP LTD
82398
A-861 SUR-849 TWNG RR CO. 139.14 ACRES

767.849 ACRES

STUDER MORTON COMPANIES INC.
10.7 ACRES